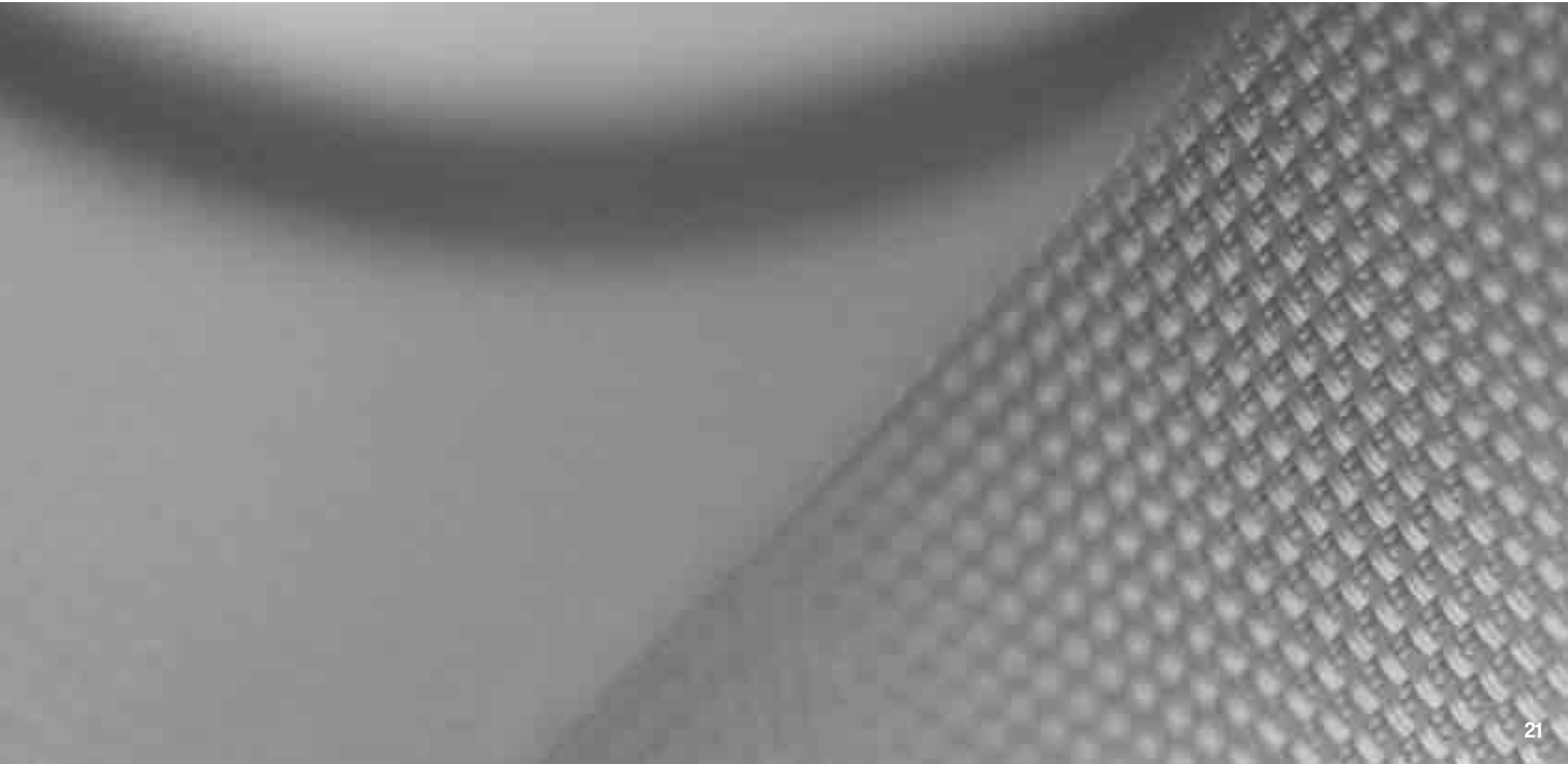
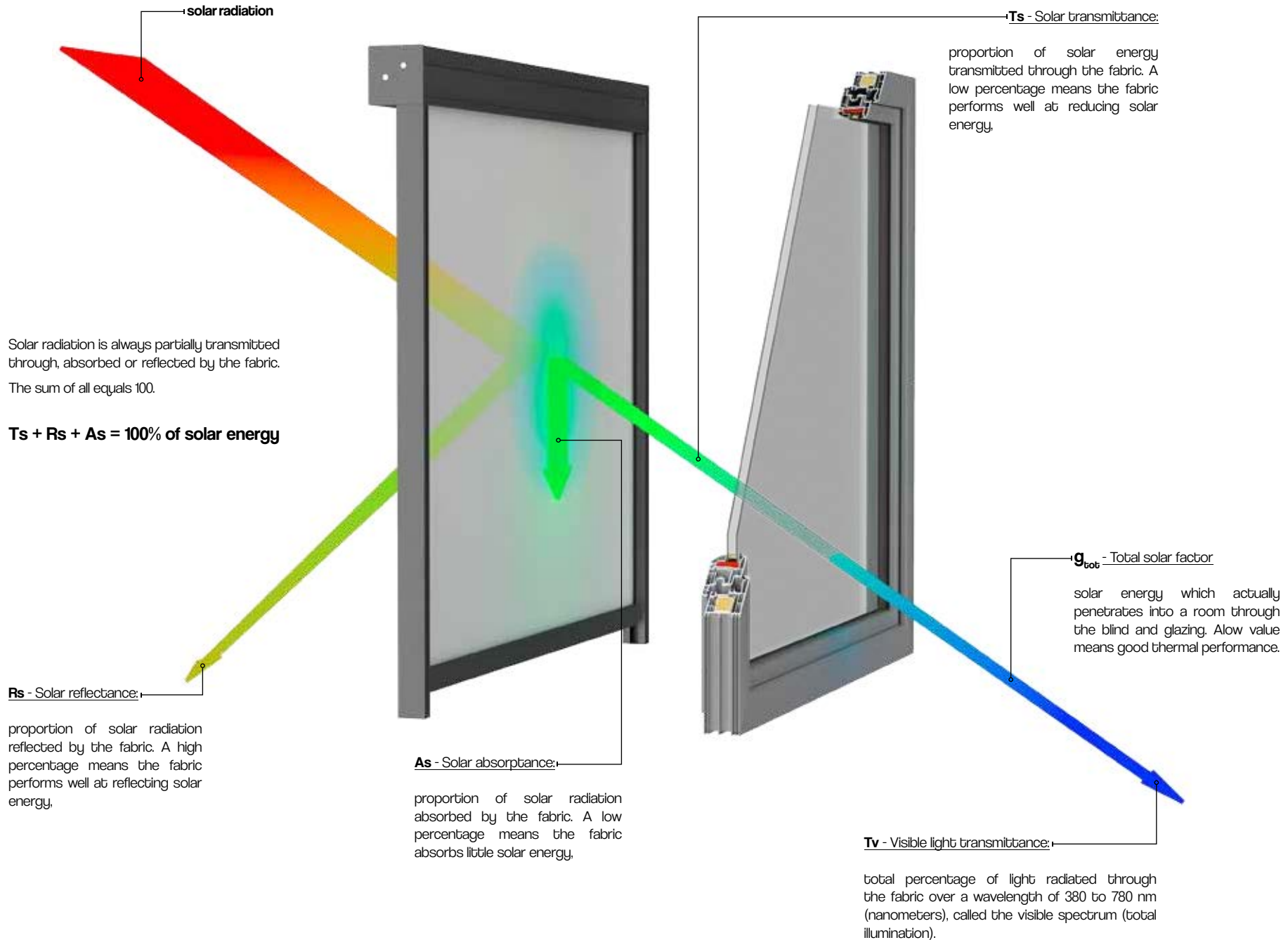


Screen

fabrics







SOLTIS 92 / SOLTIS 99

SUNWORKER

POLYSCREEN

BLACK OUT

ACOUSTIC - VEROGLIM

SERGE 100 / SERGE 600

OPENNES FACTOR:

Relative area of the openings in the fabric. It is considered as independent of the colour. For fabric with the same weave, it should be measured using the darkest colour in the range

Polyester technical fabric coated with PVC, manufactured with patented technology Precontraint Ferrari®. The unique technology gives fabric high stability and protects it against deformations even in large size blinds. High technical parameters guarantee optical and thermal comfort. The quality components used in production of this fabric ensures color fastness. Thanks to the smooth surface, the fabric is difficult to absorb dirt or get stained.

Smooth polyester fabric finished with PVC. Unique structure of the fabric effectively stops the sunlight, allowing for just optimal amount of visible light to transmit inside the room, providing high comfort to its users. The advantages of this fabric are: color fastness, high resistance to weather conditions and easy to maintain clean.

Wide group of technical polyester fabrics coated with PVC, characterized by variety of weaving patterns and properties (PS Luminous, PS 550, PS 350). This allows architects to select the right solution, increasing visual attractiveness of the building and to emphasize its individual character. High technical parameters provide optical and thermal comfort inside the room. An additional feature of the fabric is the ease to keep it clean.

High-end blackout fabrics in group of Polyscreen 314 BO, effectively block sunlight coming into the room. It is ideal solution for conference rooms, audio-visual, photographic studios, etc. High dimensional stability, high technical parameters and interesting colours are without a doubt advantages of fabrics in this group.

Elegant fabric, made from the highest quality non-flammable polyester fibers Trevira® CS, intended for indoor use. Because of its weight, the fabric is ideally suited for cassette systems. An important advantage of this fabric is high coefficient of acoustics. Thanks to its structure, the fabric absorbs sound and mutes the room. Another advantage is metallic surface that reflects bright light and in this way regulates its intensity in the room.

Collection of fabrics made from fiberglass covered with PVC. Fabrics made of this group have a distinctive diagonal „serge” weave, which guarantees them an unusual dimensional stability. High fire resistance and very good technical parameters of fabrics provide users with visual comfort in rooms, thus protecting against overheating the interior.

The pictures are presented for illustration purpose only, differences in tones are permissible. Any difference in tone does not constitute grounds for complaint.

	composition	weight [g/m ²]	thickness [mm]	light fastness blue scale level EN ISO 105 B02	light fastness grey scale level EN ISO 4892	openness factor [%]	internal method				application
							TS [%]	RS [%]	AS [%]	TV [%]	
Ash (Ebony Grey)	85% PVC + 15% PES	610 ± 5%	078 ± 5%	8 / 8	5 / 5	5	6	7	87	6	interior / exterior
Pearl-Grey							11	29	60	9	
White-Grey							13	37	50	12	
White-Pearl							16	57	27	12	
Pearl-Sand							13	37	50	10	
Pearl-Linen							17	46	37	12	
White-Linen							18	63	17	16	
White							19	69	12	15	

Tearing resistance (daN) UNE EN ISO 13937-3:2001 - Warp: 6.6, Weft: 5.3
 Breaking strength (daN/5cm) UNE EN ISO 13934-1:1999 - Warp: 174, Weft: 133
 Stretch (%) UNE EN ISO 13934-1:1999 - Warp: 22%, Weft: 21%
 Flame retardant - certificate on request



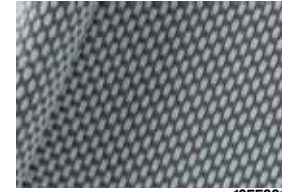
POLYSCREEN® 550

ASH (EBONY GREY)



10550017

PEARL GREY



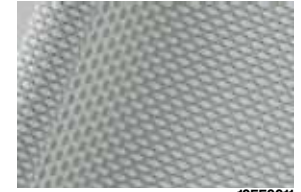
10550013

WHITE GREY



10550012

WHITE PEARL



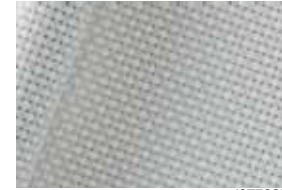
10550011

PEARL SAND



10550023

PEARL LINEN



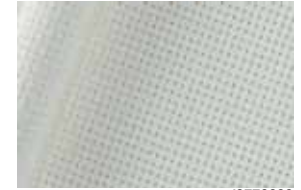
10550021

WHITE LINEN



10550019

WHITE



10550009

	composition	weight [g/m ²]	thickness [mm]	light fastness blue scale level EN ISO 105 B02	light fastness grey scale level EN ISO 4892	openness factor [%]	internal method				application
							TS [%]	RS [%]	AS [%]	TV [%]	
Gold-Ebony	85% PVC + 15% PES	610 ± 5%	078	8 / 8	5 / 5	5	11	8	81	10	interior / exterior
Gold-Crystal							18	17	65	22	
Gold-Linen							13	25	62	14	

Tearing resistance (daN) UNE EN ISO 13937-3:2001 - Warp: 6.6, Weft: 5.3
 Breaking strength (daN/5cm) UNE EN ISO 13934-1:1999 - Warp: 174, Weft: 133
 Stretch (%) UNE EN ISO 13934-1:1999 - Warp: 22%, Weft: 21%
 Flame retardant - certificate on request



**POLYSCREEN® 550
GOLD**

GOLD EBONY



10550051

GOLD CRYSTAL



10550052

GOLD LINEN



10550053

	composition	weight [g/m ²]	thickness [mm]	light fastness blue scale level EN ISO 105 B02	light fastness grey scale level EN ISO 4892	openness factor [%]	internal method				application
							TS [%]	RS [%]	AS [%]	TV [%]	
Silver-Bronze	85% PVC + 15% PES	610 ± 5%	078	8 / 8	5 / 5	5	17	14	69	17	interior / exterior
Silver-Grey							16	17	67	17	
Silver-Silver							21	23	56	22	

Tearing resistance (daN) UNE EN ISO 13937-3:2001 - Warp: 6.6, Weft: 5.3
 Breaking strength (daN/5cm) UNE EN ISO 13934-1:1999 - Warp: 174, Weft: 133
 Stretch (%) UNE EN ISO 13934-1:1999 - Warp: 22%, Weft: 21%
 Flame retardant - certificate on request



**POLYSCREEN® 550
SILVER**

SILVER BRONZE



10550041

SILVER GREY



10550042

SILVER SILVER



10550043

	composition	weight [g/m ²]	thickness [mm]	light fastness blue scale level EN ISO 105 B02	light fastness grey scale level EN ISO 4892	openness factor [%]	internal method				application
							TS [%]	RS [%]	AS [%]	TV [%]	
Ash (Ebony Grey)	80% PVC + 20% PES	400 ± 5%	0,53 ± 5%	8 / 8	5 / 5	10	10	8	82	10	interior / exterior
Pearl-Grey							16	26	58	14	
White-Linen							27	58	15	23	
White							25	64	11	22	

Tearing resistance (daN) UNE EN ISO 13937-3:2001 - Warp: 4,8, Weft: 5,2
 Breaking strength (daN/5cm) UNE EN ISO 13934-1:1999 - Warp: 145, Weft: 127
 Stretch (%) UNE EN ISO 13934-1:1999 - Warp: 21%, Weft: 23%
 Flame retardant - certificate on request



POLYSCREEN® 350

ASH (EBONY GREY)



10350017

PEARL GREY



10350013

WHITE LINEN



10350019

WHITE



10350009

	composition	weight [g/m ²]	thickness [mm]	light fastness blue scale level EN ISO 105 B02	light fastness grey scale level EN ISO 4892	openness factor [%]	internal method				application	
							TS [%]	RS [%]	AS [%]	TV [%]		
Arizona	85% PVC + 15% PES	511 ± 5%	0,78	8 / 8	5 / 5	13	15	10	75	16	interior / exterior	
Sahara A		612 ± 5%	0,82				6	10	15	75		11
Sahara B		612 ± 5%	0,82				6	10	12	78		10
Kalahari		555 ± 5%	0,80				7	23	23	54		23
Atacama		594 ± 5%	0,77				10	20	14	66		22
Mojave		516 ± 5%	0,90				11	14	8	78		14

Tearing resistance (daN) UNE EN ISO 13937-3:2001 - Warp: 5,4, Weft: 6,4
 Breaking strength (daN/5cm) UNE EN ISO 13934-1:1999 - Warp: 110,3, Weft: 100,9
 Stretch (%) UNE EN ISO 13934-1:1999 - Warp: 23,2%, Weft: 20%
 Flame retardant - certificate on request



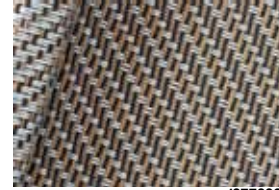
POLYSCREEN® LUMINOUS

ARIZONA



10550061

SAHARA A



10550063

SAHARA B



10550062

KALAHARI



10550064

ATACAMA



10550065

MOJAVE



10550066

	composition	weight [g/m ²]	thickness [mm]	light fastness blue scale level EN ISO 105 B02	light fastness grey scale level EN ISO 4892	openness factor [%]	internal method				application
							TS [%]	RS [%]	AS [%]	TV [%]	
Coupage 1	85% PVC + 15% PES	610 ± 5%	0,78	8 / 8	5 / 5	5	10	8	82	10	interior / exterior
Coupage 2							12	13	75	12	
Coupage 3							20	21	59	19	
Coupage 4							17	16	67	17	

Tearing resistance (daN) UNE EN ISO 13937-3:2001 - Warp: 6,6, Weft: 5,3
 Breaking strength (daN/5cm) UNE EN ISO 13934-1:1999 - Warp: 174, Weft: 133
 Stretch (%) UNE EN ISO 13934-1:1999 - Warp: 22%, Weft: 21%
 Flame retardant - certificate on request



POLYSCREEN® 550 COUPAGE

COUPAGE 1



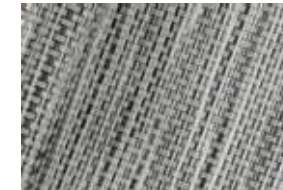
10550031

COUPAGE 2



10550032

COUPAGE 3



10550033

COUPAGE 4



10550034

	composition	weight [g/m ²]	thickness [mm]	light fastness blue scale level EN ISO 105 B02	light fastness grey scale level EN ISO 4892	openness fac- tor [%]	EN 14501				application
							TS [%]	FS [%]	AS [%]	TV [%]	
Ebony Grey	80% PVC + 20% PES coated with PVC	610 ± 5%	0,66 ± 5%	8 / 8	4 / 5	0	0	36	64	0	interior / exterior
Ebony Linen											
Linen Bronze											
Linen Sand											
Ebony Sand											

Tearing resistance (daN) UNE EN ISO 13937-3:2001 - Warp: 4.4, Weft: 2.5
 Breaking strength (daN/5cm) UNE EN ISO 13934-1:1999 - Warp: 147, Weft: 91
 Stretch (%) UNE EN ISO 13934-1:1999 - Warp: 26.7%, Weft: 17.6%
 Flame retardant - certificate on request



POLYSCREEN® 314
BLACK OUT

EBONY GREY



10314B20

EBONY LINEN



10314B08

LINEN BRONZE



10314B06

LINEN SAND



10314B04

EBONY SAND



10314B10

	composition	weight [g/m ²]	thickness [mm]	light fastness blue scale level EN ISO 105 B02	openness factor [%]	EN 14501				application
						TS [%]	FS [%]	AS [%]	TV [%]	
White-White 02002	42% glassfibre + 58% pvc	535	0,55	>7	5	21/21	65.9/66.3	13.2/12.7	21.2/21.2	interior / exterior
Grey-White 01002						6.7/6.7	3.72/26.9	56.2/66.4	6.6/6.6	
Pearl-Grey 07007						101/101	38.3/39.4	51.7/50.5	8.4/8.4	
Grey-Grey 01001						3.5/3.5	15.1/15.1	81.3/81.4	3.6/3.6	
Grey-Charcoal 01010						3.6/3.6	9.9/12.6	86.5/83.8	3.6/3.6	
Charcoal-Charcoal 10010						3.6/3.6	50/4.8	91.4/91.6	3.6/3.6	

Tearing resistance (daN) UNE EN ISO 4674-1 method 2 - Warp: 8.5, Weft: 7.5
 Breaking strength (daN/5cm) UNE EN ISO 1421 - Warp: 260, Weft: 225
 Flame retardant - certificate on request



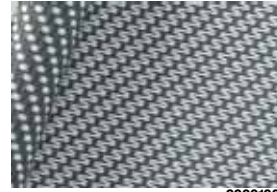
SERGE 600

WHITE WHITE



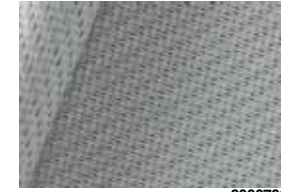
60002002

GREY WHITE



60001002

PEARL GREY



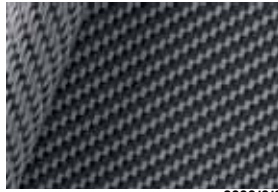
60007007

GREY GREY



60001001

GREY CHARCOAL



60001010

CHARCOAL CHARCOAL



60001000

	composition	weight [g/m ²]	thickness [mm]	light fastness blue scale level EN ISO 105 B02	openness factor [%]	EN 14501				application
						TS [%]	FS [%]	AS [%]	TV [%]	
White-White 02002	42% glassfibre + 58% pvc	620	0,8	>7	1	12.8	71.3	15.9	12.9	interior / exterior
Grey-White 01002						2.2	44.8 / 31.2	53 / 66.6	2	
Pearl-Grey 07007						2.8	36.9	60.3	2.1	
Grey-Grey 01001						2.4	17.4	80.2	2.2	
Grey-Charcoal 01010						1.2	10.5 / 14	88.3 / 84.8	1.2	
Charcoal-Charcoal 10010						1.1	5.9	93	1.1	

Tearing resistance (daN) UNE EN ISO 4674-1 method 2 - Warp: 5.9, Weft: 6.2
 Breaking strength (daN/5cm) UNE EN ISO 1421 - Warp: 321, Weft: 277
 Flame retardant - certificate on request



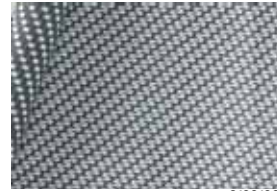
SERGE 100

WHITE WHITE



61002002

GREY WHITE



61001002

PEARL GREY



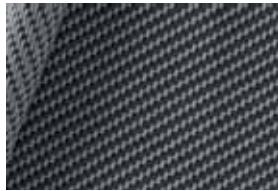
61007007

GREY GREY



61001001

GREY CHARCOAL



61001010

CHARCOAL CHARCOAL



61001000

	composition	weight [g/m ²]	thickness [mm]	light fastness grey scale level EN ISO 105 B02	light fastness grey scale level EN ISO 105 B04	openness factor [%]	EN 14501				application	
							TS [%]	RS [%]	AS [%]	TV [%]		
White SWK005	Polyester / PVC	320	0.42	6 / 8	3-4 / 5	6	6	23	66	11	21	interior / exterior
Iron SWK653							6	12	35	53	10	
Champagne SWK711							6	21	50	29	18	
Charcoal SWK392							6	6	7	87	6	

Tearing strength (daN/5cm) DIN 53363 - Warp: 43, Weft: 22
Tensile strength (daN/5cm) NF EN ISO 13934-1 - Warp: 220, Weft: 150
Flame retardant - certificate on request



SYSTEM
LOWICK



SUNWORKER

	composition	weight [g/m ²]	thickness [mm]	light fastness grey scale level EN ISO 105 B04	openness factor [%]	EN 14501				application	
						TS [%]	RS [%]	AS [%]	TV [%]		
Charcoal 2047	Polyester / PVC	420	0.45	5 / 5	4	5	8	87	5	interior / exterior	
Concrete 2167						3	19	78	3		
Glossy 2065						4	46	44	7		
Silver 2048						2	46	46	8		
Silver-Black 2045						5	3	35	62		3
Silver-White 2051						4 / 5, 3 / 5	10 / 9	50 / 70	40 / 21		10 / 9
Sandy Beige 2135						5 / 5	9	46	45		6
White 2044						2 / 5	20	70	10		19

Tear strength (daN) DIN 53363 - Warp: 45, Weft: 20
Tensile strength (daN/5cm) EN ISO 1421 - Warp: 310, Weft: 210
Flame retardant - certificate on request



SOLTS® 92

	composition	weight [g/m ²]	thickness [mm]	light fastness grey scale level EN ISO 105 B04	openness factor [%]	EN 14501				application
						TS [%]	RS [%]	AS [%]	TV [%]	
White 2055	Polyester / PVC	290	0.32	4 / 5, 4 / 5	3	9 / 9	50 / 69	41 / 22	8	interior
Quartz 50285				4 / 5, 5 / 5		9 / 9	47 / 60	44 / 31	8	
Sandy Beige 50286				4 / 5, 5 / 5		7 / 7	44 / 45	49 / 48	6	
Spume 50284				4 / 5, 4 / 5		9 / 9	48 / 63	43 / 28	7	
Light Grey 2058				4 / 5, 5 / 5		7 / 7	47 / 45	46 / 48	6	
Alu 2059				4 / 5, 4 / 5		4	47	49	3	
Antracite 2068	4 / 5, 5 / 5	3 / 3	36 / 9	61 / 88	2					

Tear strength (daN) DIN 53363 - Warp: 11, Weft: 13
Tensile strength (daN/5cm) EN ISO 1421 - Warp: 160, Weft: 170
Flame retardant - certificate on request



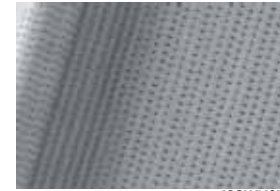
SOLTS® 99

WHITE



40SWK005

IRON



40SWK653

CHAMPAGNE



40SWK711

CHARCOAL



40SWK392

CHARCOAL



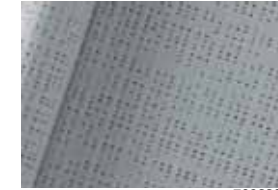
50922047

CONCRETE



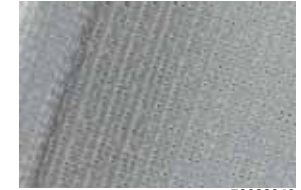
50922167

GLOSSY



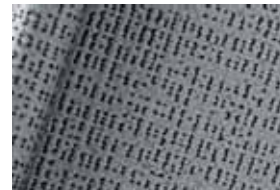
50922065

SILVER



50922048

SILVER BLACK



50922045

SILVER WHITE



50922051

SANDY BEIGE



50922135

WHITE



50922044

WHITE



50992055

QUARTZ



509950285

SANDY BEIGE



509950286

SPUME



509950284

LIGHT GREY



50992058

ALU



50992059

ANTRACITE



50992068

	composition	weight [g/m ²]	thickness [mm]	light fastness blue scale level EN ISO 105 B02	openness factor [%]	DIN EN 410				application
						TS [%]	FS [%]	AS [%]	TV [%]	
Grey-Silver 115	Trevira CS	220	0.43	5-6 / 8	1	5	50	45	2	Interior
Light Grey-Silver 114						5	52	43	4	
White-Silver 111						7	52	41	7	
Ivory-Silver 113						6	49	45	6	

Flame retardant - certificate on request



$\alpha_w = 60\%$



VEROGLIM
ACOUSTIC

GREY SILVER



34022115

LIGHT GREY SILVER



34022114

WHITE SILVER



34022111

IVORY SILVER



34022113